

# Lakefront Plaza

21 Enterprise Parkway  
Hampton, Virginia

**LIBERTY**  
PROPERTY TRUST



## Floors/Leasable Area:

This building is 100% leased.

## Features & Amenities

- 76,000 square feet; four stories with approximately 20,000 square feet each
- Advanced energy management and security systems
- Lighted and extensively landscaped grounds and parking on a three acre lakefront site
- Two-story atrium with polished marble tile throughout; decorative carpet and eight foot suite entry doors
- Close proximity to Newport News/Williamsburg International Airport, NASA, Langley Air Force Base; hotels, dining, and shopping immediately accessible
- Owned, managed, and leased by Liberty Property Trust

## About Liberty Property Trust

Liberty Property Trust (NYSE:LRY) is a leading real estate company dedicated to enhancing people's lives through extraordinary work environments. Liberty's portfolio of office and industrial properties offers exceptional locations, flexible design, thoughtful amenities, superior service, and state-of-the-art technology to the company's tenants. Liberty continuously increases the value of this portfolio through expert property management, marketing and development.

**LIBERTY**  
PROPERTY TRUST

*Enhancing people's lives through extraordinary work environments.*

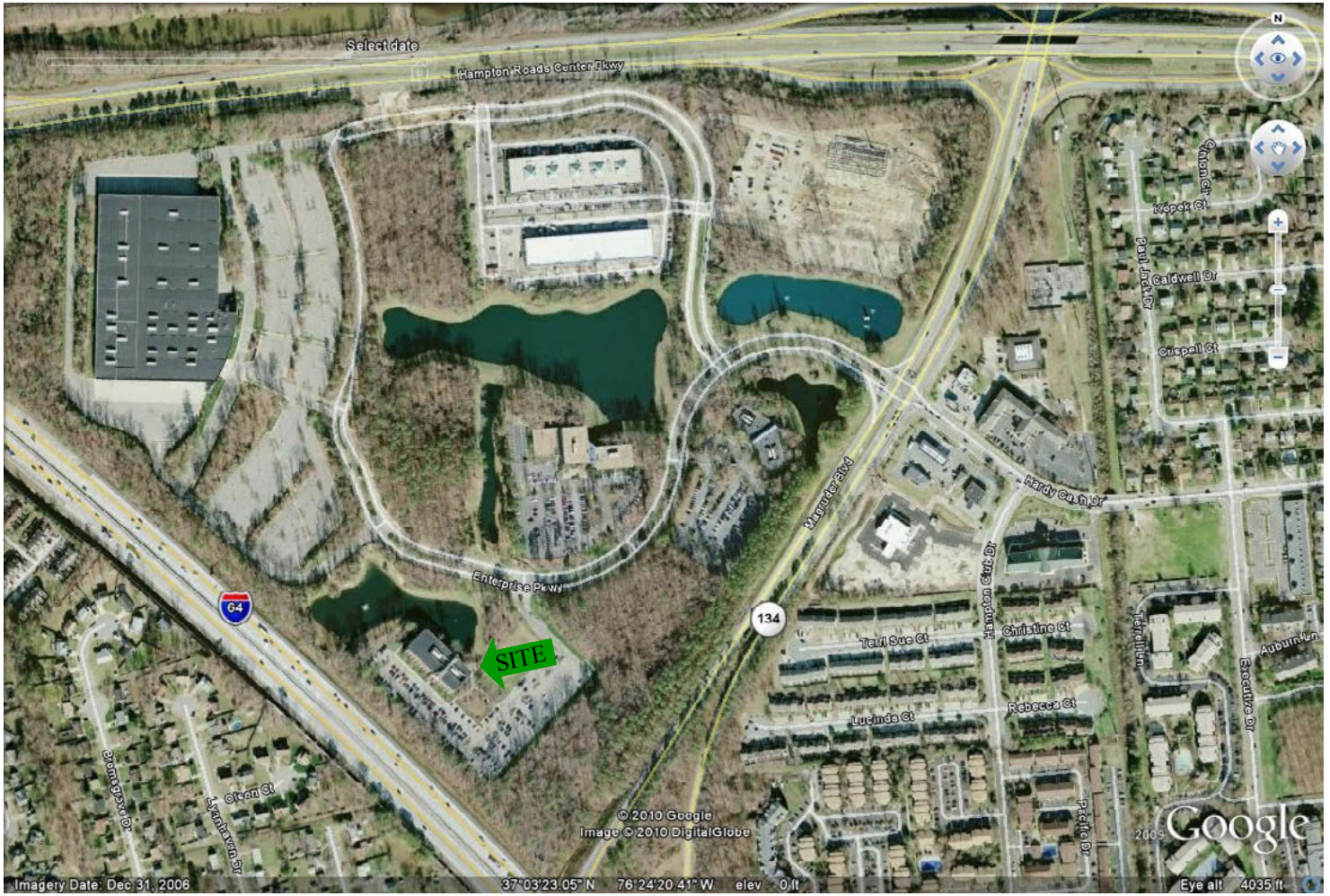
208 Golden Oak Court • Suite 475 • Virginia Beach • VA • 23452  
757.498.4800 • [www.libertyproperty.com](http://www.libertyproperty.com)

## CONTACT:

Brian Devlin  
Senior Leasing Representative  
757.498.4800  
[bdevlin@libertyproperty.com](mailto:bdevlin@libertyproperty.com)

# Lakefront Plaza

21 Enterprise Parkway  
Hampton, Virginia



*Enhancing people's lives through extraordinary work environments*

757-498-4800 • [www.libertyproperty.com](http://www.libertyproperty.com)