

Oxford Plaza

1 Enterprise Parkway
Hampton, Virginia

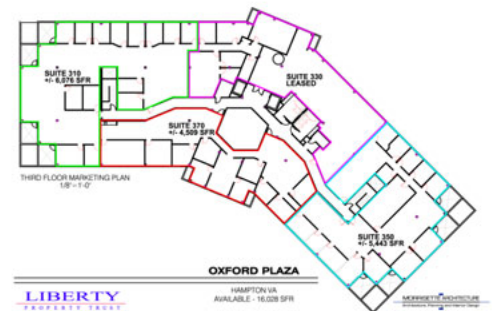
LIBERTY
PROPERTY TRUST



Floors/Leasable Area:



Suite 215: 4,091 RSF, Second Floor



Suite 300: Approximately 16,000 RSF
Divisible

Features & Amenities

- ◆ Three-story, 72,404 square foot, Class A office building
- ◆ Extensively landscaped 5.6-acre lakefront site surrounded by jogging and pedestrian pathways
- ◆ Lighted and extensively landscaped parking
- ◆ Three-story, fully skylighted atrium lobby with views from all office suites
- ◆ Polished granite and wood accented lobby with eight-foot suite entry doors accented in Honduran mahogany
- ◆ Newport News/Williamsburg International Airport, NASA, Langley Air Force Base, hotels, dining, and shopping immediately accessible

Liberty Property Trust (NYSE:LRV) is a leading real estate company dedicated to enhancing people's lives through extraordinary work environments. Liberty's portfolio of office and industrial properties offers exceptional locations, flexible design, thoughtful amenities, superior service, and state-of-the-art technology to the company's tenants. Liberty continuously increases the value of this portfolio through expert property management, marketing and development.

LIBERTY
PROPERTY TRUST

208 Golden Oak Court, Suite 475, Virginia Beach, VA 23452
757-498-4800 • www.libertyproperty.com

CONTACT:

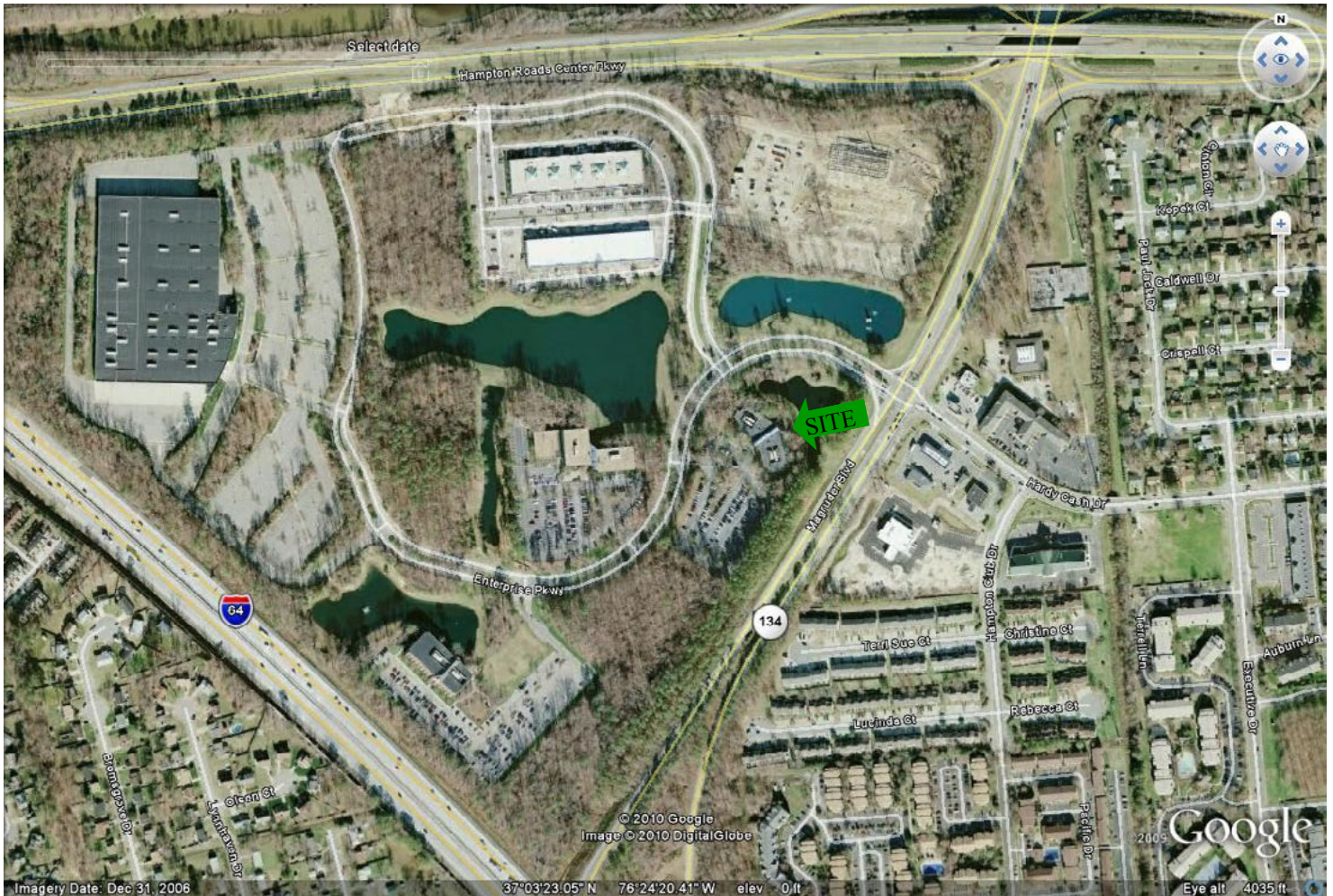
Brian Devlin
Senior Leasing Representative
T: 757.498.4800
bdevlin@libertyproperty.com

Oxford Plaza

1 Enterprise Parkway
Hampton, Virginia

LIBERTY

PROPERTY TRUST



LIBERTY
PROPERTY TRUST

208 Golden Oak Court, Suite 475, Virginia Beach, VA 23452
757-498-4800 • www.libertyproperty.com

CONTACT:

Brian Devlin
Senior Leasing Representative
T: 757.498.4800
bdevlin@libertyproperty.com